



A TEREX BRAND

Service Manual

Serial Number Range

GR™-12

from GR10-20000

GR™-15

from GR10-20000

GR™-20

from GR10-20000

QS-12R

from QS11-1000

QS-15R

from QS11-1000

QS-20R

from QS11-1000

QS-12W

from QS11-1000

QS-15W

from QS11-1000

QS-20W

from QS11-1000

Part No. T110280

Rev B

October 2011

Introduction

Important

Read, understand and obey the safety rules and operating instructions in the appropriate Operator's Manual on your machine before attempting any maintenance procedure.

Basic mechanical, hydraulic and electrical skills are required to perform most procedures. However, several procedures require specialized skills, tools, lifting equipment and a suitable workshop. In these instances, we strongly recommend that maintenance and repair be performed at an authorized Genie dealer service center.

Compliance

Machine Classification

Group A/Type 3 as defined by ISO 16368

Machine Design Life

Unrestricted with proper operation, inspection and scheduled maintenance.

Technical Publications

Genie has endeavored to deliver the highest degree of accuracy possible. However, continuous improvement of our products is a Genie policy. Therefore, product specifications are subject to change without notice.

Readers are encouraged to notify Genie of errors and send in suggestions for improvement. All communications will be carefully considered for future printings of this and all other manuals.

Serial Number Information

Genie offers the following Service Manuals for these models:

Title	Part No.
Genie Runabout Service Manual, First Edition (GR - before serial number 5001)	72965
Genie Runabout Service Manual, Second Edition (GR - from serial number 5001 to 19999) (QS - from 101 to 999)	84700

Copyright © 2011 by Terex Corporation

T110280 Rev B October 2011
Third Edition, Second Printing

"Genie" is a registered trademark of Terex South Dakota in the USA and many other countries.
"GR" is a trademark of Terex South Dakota, Inc.

 Printed on recycled paper

Printed in U.S.A.

Serial Number Legend

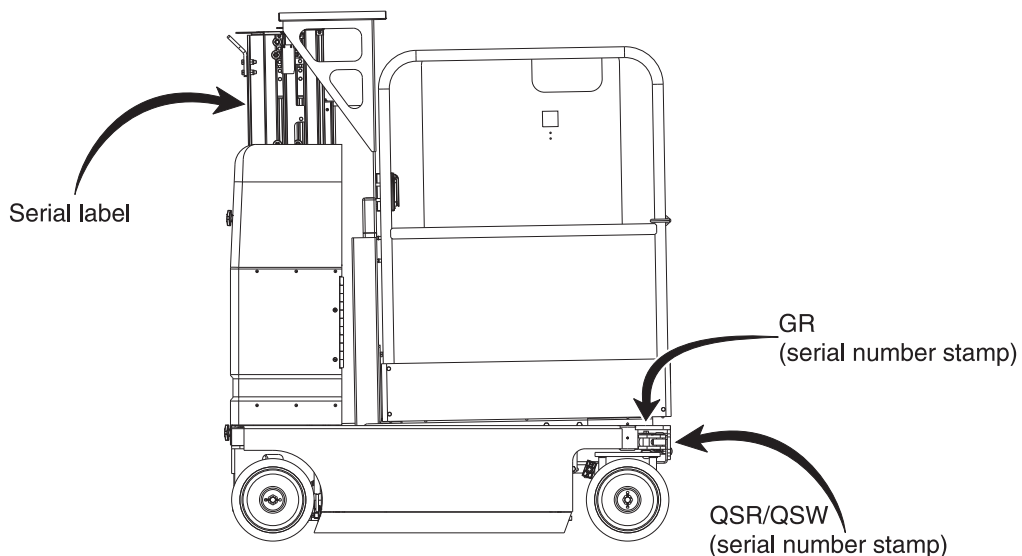
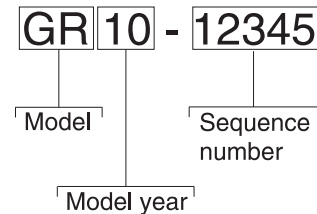

Genie
A TEREX BRAND

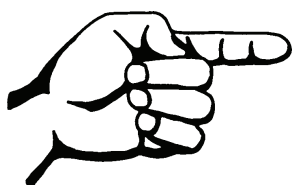
Model: GR-15
Serial number: GR10-12345
Manufacture date: 09/01/2010 **Model year:** 2010
Elec/Hydr Schematic: ES0523/HS0039
Power supply voltage/Pneumatic Pressure:
85-264 VAC, 60/50 Hz, 900 W
Nominal Power: 8.3 Hp / 6.2 kW
Machine unladen weight: 2,249 lbs / 1,020 kg
Max Load: 350 lbs / 159 kg
Occupants and Equipment must not exceed:
350 lbs / 159 kg
Maximum allowable inclination of the chassis:
1.5°(Side) 3°(Front) 3°(Rear)
Maximum Wind Speed:
Indoor: 0 mph / 0 m/s
Outdoor: N/A
Gradeability: 30%
Maximum allowable side force: 45 lbs / 200 N
Maximum platform height: 14 ft 8 in / 4.47 m
Maximum Travel Height: Full height
Maximum number of platform occupants: 1
Country of manufacture:

Manufacturer:
Terex South Dakota, Inc.
500 Oak Wood Drive
PO Box 1150
Watertown, SD 57201
USA

European Representative:
Genie UK LTD
The Maltings
Wharf Road, Grantham, Lin
NG31 6BH United Kingdom

This machine complies with:
EN 280
98/37/EC





This page intentionally left blank.

Safety Rules



Danger

Failure to obey the instructions and safety rules in this manual and the appropriate Operator's Manual on your machine will result in death or serious injury.

Many of the hazards identified in the operator's manual are also safety hazards when maintenance and repair procedures are performed.

Do Not Perform Maintenance Unless:

- You are trained and qualified to perform maintenance on this machine.
- You read, understand and obey:
 - manufacturer's instructions and safety rules
 - employer's safety rules and worksite regulations
 - applicable governmental regulations
- You have the appropriate tools, lifting equipment and a suitable workshop.

SAFETY RULES

Personal Safety

Any person working on or around a machine must be aware of all known safety hazards. Personal safety and the continued safe operation of the machine should be your top priority.



Read each procedure thoroughly. This manual and the decals on the machine, use signal words to identify the following:



Safety alert symbol—used to alert personnel to potential personal injury hazards. Obey all safety messages that follow this symbol to avoid possible injury or death.



DANGER Indicates an imminently hazardous situation which, if not avoided, will result in death or serious injury.



WARNING Indicates a potentially hazardous situation which, if not avoided, could result in death or serious injury.



CAUTION Indicates a potentially hazardous situation which, if not avoided, may cause minor or moderate injury.



NOTICE Indicates a potentially hazardous situation which, if not avoided, may result in property damage.



Be sure to wear protective eye wear and other protective clothing if the situation warrants it.



Be aware of potential crushing hazards such as moving parts, free swinging or unsecured components when lifting or placing loads. Always wear approved steel-toed shoes.

Workplace Safety



Be sure to keep sparks, flames and lighted tobacco away from flammable and combustible materials like battery gases and engine fuels. Always have an approved fire extinguisher within easy reach.



Be sure that all tools and working areas are properly maintained and ready for use. Keep work surfaces clean and free of debris that could get into machine components and cause damage.



Be sure any forklift, overhead crane or other lifting or supporting device is fully capable of supporting and stabilizing the weight to be lifted. Use only chains or straps that are in good condition and of ample capacity.



Be sure that fasteners intended for one time use (i.e., cotter pins and self-locking nuts) are not reused. These components may fail if they are used a second time.



Be sure to properly dispose of old oil or other fluids. Use an approved container. Please be environmentally safe.



Be sure that your workshop or work area is properly ventilated and well lit.

Table of Contents

Introduction

Important Information	<i>ii</i>
Serial Number Information	<i>ii</i>
Serial Number Legend	<i>iii</i>

Section 1

Safety Rules

General Safety Rules	<i>v</i>
----------------------------	----------

Section 2

Rev

Specifications

B	Machine Specifications	2 - 1
	Performance Specifications	2 - 2
	Hydraulic Specifications	2 - 3
	Manifold Component Specifications	2 - 4
	Hydraulic Hose and Fitting Torque Specifications	2 - 5
	SAE and Metric Fasteners Torque Charts	2 - 7

Section 3

Rev

Scheduled Maintenance Procedures

	Introduction	3 - 1
	Pre-delivery Preparation Report	3 - 3
	Maintenance Inspection Report	3 - 5
A	Checklist A Procedures	
A-1	Inspect the Manuals and Decals	3 - 6
A-2	Perform Pre-operation Inspection	3 - 7
A-3	Perform Function Tests	3 - 7
A-4	Test the Obstruction Sensing System (QSR models only)	3 - 8
A-5	Perform 30 Day Service	3 - 10
A-6	Grease the Steer Yokes	3 - 10