

# Genie®

A TEREX COMPANY

---

## SERVICE MANUAL

Code 57.4403.3200 - 2<sup>nd</sup> Edition 01/2008

---

*Handler with telescopic boom*

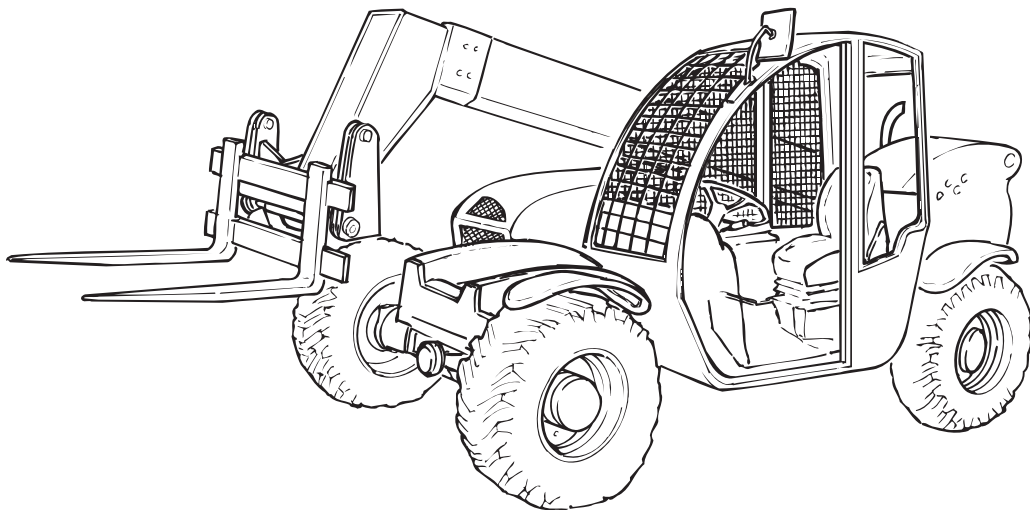
### GTH 55-19

*(from serial n. 17548 to serial n. 17565)*

*(from serial n. 17822 to serial n. 17825)*

*(from serial n. 18154 to serial n. 18168)*

*(from serial n. 18556 to serial n. 18586)*



**English**  
Edition

**INDEX**

**MANUAL CONTENTS**

**INTRODUCTION**

**Sect. 1 SAFETY RULES**

**Sect. 2 TECHNICAL SPECIFICATIONS**

**Sect. 3 SCHEDULED MAINTENANCE INSPECTIONS**

**Sect. 4 SCHEDULED MAINTENANCE PROCEDURES**

**Sect. 5 TROUBLESHOOTING**

**Sect. 6 SCHEMES**

**Sect. 7 REPAIR PROCEDURES**