



Service Manual

Serial number range

GTH-2506

From serial n.: 18957

AGRI-625

From serial n.: 19057

GTH-3007

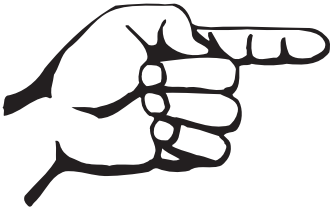
From serial n.: 19051

AGRI-730

From serial n.: 19241

Part No. 57.0009.0419

April 2008



Intentionally blank page

Introduction

Important information

Read, understand and obey the safety rules and operating instructions in the **GTH 2506 and AGRI 625 Operator's Manual** (code 57.0009.0413) and **GTH 3007 e AGRI 730 Operator's Manual** (code 57.0009.0445) before attempting any maintenance or repair procedure.

This manual provides the machine owner and user with detailed information on the scheduled maintenance. It also provided qualified service technicians with information on troubleshooting and repair procedures.

Basic mechanical, hydraulic and electrical skills are required to perform most procedures. However, several procedures require specialized skills, as well as specific tools and equipment.

In these instances, we strongly recommend letting service and repair the machine at an authorized TEREXLIFT service center.

Technical Publications

No part of this publication may be reproduced, stored in a retrieval system or transmitted in any form or by any means without prior written permission from TEREXLIFT srl.

In pursuing a policy of constant quality improvement, TEREXLIFT srl reserves the right to make changes at any time and without undertaking to give prior notice; therefore, also this publication may be subject to modifications.

© Copyright 2008 TEREXLIFT srl - All rights reserved

First Edition, First Printing, April 2008

*For going to Table of Contents,
click on Genie symbol*