

**Operation**

Important information on this service manual ..... 1-1  
 Serial plates and component numbers ..... 1-2  
 Machine overview ..... 1-4  
 Inside of cab: overview ..... 1-5  
 Inside of cab: legend ..... 1-6  
 Instrument panel, multifunctional lever and drive lever: overview ..... 1-7  
 Instrument panel, multifunctional lever and drive lever: legend ..... 1-8

**Specifications**

Frame ..... 2-1  
 Engine ..... 2-1  
 Power train ..... 2-2  
 Axles ..... 2-3  
 Brakes ..... 2-3  
 Steering ..... 2-3  
 Work hydraulics ..... 2-4  
 Pilot control ..... 2-4  
 Additional control circuit + high-flow control circuit (option) ..... 2-4  
 Loader unit ..... 2-5  
 Electrical system ..... 2-5  
 Tires ..... 2-8  
 Weights ..... 2-9  
 Sound levels ..... 2-9  
 Vibration ..... 2-9  
 Hardware torques ..... 2-10  
 Dimensions ..... 2-11

**Maintenance**

Fluids and lubricants ..... 3-1  
 Maintenance decal ..... 3-2  
 Maintenance schedule Model 680 (overview) ..... 3-4  
 Maintenance items ..... 3-7  
 Introduction ..... 3-7  
 Fuel system ..... 3-8  
 Engine lubrication system ..... 3-11  
 Engine and hydraulics cooling system ..... 3-14  
 Air filter ..... 3-15  
 V-belt ..... 3-17  
 Gearboxes and axles ..... 3-18  
 Hydraulic system ..... 3-24  
 Lubrication points ..... 3-28  
 Attachments ..... 3-29  
 Brake system ..... 3-30  
 Tire care ..... 3-31  
 Changing wheels ..... 3-32  
 Electrical system ..... 3-33  
 General maintenance work ..... 3-36  
 Heating ..... 3-39

**Engine**

Engine BF4M 2011: overview ..... 4-1  
 Engine oil cooling ..... 4-2  
 Fuel system ..... 4-3  
 Checking and adjusting valve tip clearance ..... 4-4  
 Replacing the fuel injection pump ..... 4-5  
 Setting charge air pressure ..... 4-10  
 Removing/mounting the cylinder head ..... 4-12  
 Engine trouble ..... 4-16

<b>Power train</b>	
Variable displacement pump 12 – 25 mph (20 – 40 km/h) .....	5-1
Hydraulic motor – control element 12 mph (20 km/h) .....	5-2
Hydraulic motor – hydraulic connections 12 mph (20 km/h) .....	5-3
Power train diagram 12 mph (20 km/h) .....	5-4
ECO-Speed – hydraulic motor 25 mph (40 km/h) .....	5-5
ECO speed power train (25 mph [40 km/h]): diagram .....	5-7
Test report model .....	5-8
Towing and transporting the machine .....	5-9
Check and adjustment instructions .....	5-10
Drive electronics operator's manual (SUSMIC) .....	5-17
Procedures (sensor) .....	5-18
<b>Axles</b>	
Serial plate – axle .....	6-1
Front axle screw connections .....	6-2
Rear axle screw connections .....	6-3
Drain, fill and check plug – front axle .....	6-4
Drain, fill and check plug – rear axle .....	6-5
Tightening torques – front axle .....	6-6
Tightening torques – rear axle .....	6-7
Sealing work .....	6-8
<b>Brakes</b>	
Brake circuit .....	7-1
Service brake .....	7-3
<b>Steering</b>	
Steering circuit .....	8-1
Steering circuit .....	8-2
Hydraulic ports on servostat .....	8-3
Pressure relief valve – servostat: settings .....	8-3
Front/rear axle steering cylinder .....	8-4
Setting the steering sensors .....	8-5
<b>Hydraulic system</b>	
Test report .....	9-1
Control valve connections: overview .....	9-2
Control valve: design .....	9-3
Pilot control unit: design .....	9-4
Valve block connections: overview .....	9-5
Pilot control circuit .....	9-6
Work hydraulics circuit .....	9-7
Load stabilizer circuit with hose burst valve .....	9-8
Load stabilizer: circuit diagram .....	9-9
Load stabilizer with hose burst valve: circuit diagram .....	9-10
Hose burst valve with load stabilizer: connections .....	9-11
Hose burst valve circuit .....	9-12
Hose burst valve circuit .....	9-13
4th control circuit (front/rear) .....	9-14
4th control circuit (front/rear) circuit .....	9-15
Lift cylinder: sealing work .....	9-16
Tilt cylinder: sealing work .....	9-17
Control cylinder (quickhitch frame): sealing work .....	9-18
Work hydraulics diagram: legend .....	9-20
Work hydraulics diagram .....	9-21

## Electrical system

Ohm's Law (current, voltage, resistance generates power) .....	10-1
Measuring equipment and methods .....	10-1
Terminal description .....	10-3
Cable color-coding .....	10-10
Relays .....	10-11
Electrical units .....	10-12
Fuse box on left and right of steering column .....	10-12
Main fuse box with relays .....	10-13
Relays .....	10-14
Steering electronics .....	10-15
Instrument panel, fuse box, relays: overview .....	10-16
Legend for wiring diagram .....	10-17
Wiring diagram .....	10-18
Legend for wiring harness 207749: engine – frame .....	10-19
Wiring harness: 207749: engine – frame .....	10-20
Legend for wiring harness 207750: cab .....	10-21
Wiring harness 207750: cab .....	10-22
Wiring harness 208562: control lever base (option) .....	10-23
Wiring harness 207968: control lever base (standard) .....	10-24
Wiring harness 207810: steering-column control lever .....	10-25
Wiring harness 208111: additional control circuit .....	10-26
Wiring harness 208609 (joystick) .....	10-27
Electronics between joystick and wiring harness 208609 .....	10-27
Wiring harness 207539: rotating beacon (option) .....	10-28
Wiring harness 207539: front working light (option) .....	10-29
Wiring harness 208589: load stabilizer (option) .....	10-30
Wiring harness 208676: solenoid valve – load stabilizer (option) .....	10-31
Wiring harness 209185: inching sensor .....	10-32
Wiring harness 209185: crawler gear – potentiometer .....	10-33
Wiring harness 208563: numberplate light (option) .....	10-34
Wiring harness 208113: air-suspension operator's seat (option) .....	10-35
Wiring harness: air conditioning (option) .....	10-36
Plug – SUSMIC .....	10-37
Relay assignment .....	10-38
Plug and socket connection: steering electronics – steering-column control lever .....	10-39
Plug and socket connection: fuse box and relay (left) .....	10-40
Plug and socket connection: fuse box and relay (right) .....	10-41
Plug and socket connection: cab .....	10-42
Plug and socket connection: instrument panel .....	10-42
Plug and socket connections: load stabilizer, speedometer 25 mph (40 km/h), front socket .....	10-43

# 1 Operation

## 1.1 Important information on this service manual

Your decision to purchase this piece of Gehl equipment was a good one. We are sure that your decision was carefully considered and that you are looking forward to many years of reliable performance from this machine.

Gehl Company has invested much time and effort in developing its lines of equipment. The equipment you have purchased is built with a great deal of pride, and designed to provide long life, efficient operation, durability and dependability.

Modern machinery has become more sophisticated and, with that in mind, Gehl Company asks that you read and COMPLETELY understand the contents of this manual and become familiar with your new machine, BEFORE attempting to service it.

This manual was developed specifically for the machine you have purchased. The information within is for your assistance in preparing, adjusting, maintaining and servicing your machine. More importantly, this manual provides a service plan for safe and proper use of your machine. Refer to the Table of Contents for an outline (by chapters) of this manual. Use the Index, located at the back of this manual, for specific chapter and topic/page number references.

If this machine is resold, Gehl Company recommends that this manual be given to the new owner.

If this machine was purchased "used," or if the owner's address has changed, please provide your Gehl dealer or Gehl Company with the owner's name and current address, along with the machine model and serial number. This will allow the registered owner information to be updated, so that the owner can be notified directly in case of an important product issue, such as a safety update program.

"Right" and "left" are determined from the position of sitting in the operator's seat, facing forward.

Gehl Company reserves the right to make changes or improvements in the design or construction of any part without incurring the obligation to install such changes on any unit previously delivered.

Throughout this manual information is provided that is introduced by the word NOTE or IMPORTANT. Be sure to read carefully and comply with the message or directive given. Following this information will improve your maintenance efficiency, help you to avoid costly breakdowns or unnecessary damage and extend your machine's life.

Operational safety and readiness of the machine depend partially on maintenance and service of the machine. This is why regular maintenance and service work is absolutely necessary. Extensive maintenance and repair work must always be carried out by a qualified technician with appropriate training. Insist on using Gehl original service parts when carrying out maintenance and repair work. This ensures operational safety and readiness of your machine, and maintains its value.

Our wide dealership network stands ready to provide any assistance required, including genuine Gehl service parts. All parts should be obtained from or ordered through your Gehl dealer. Give complete information about the part as well as the model number and serial number of your machine. Record numbers, in the spaces provided, as a handy record for quick reference.

Purchased from: \_\_\_\_\_

Date of Purchase: \_\_\_\_\_

Model No.: \_\_\_\_\_

Serial No.: \_\_\_\_\_

## Abbreviations/symbols

- This symbol stands for a list.
  - Subdivision within lists or an activity. Follow the steps in the recommended sequence.
- ☞ This symbol requires you to perform the activity described.
- ➔ This symbol marks the passages in the text describing the effects or results of an activity.
- n. s. = not shown.
- “Option” = optional equipment.
- Stated whenever controls or other components of the machine are installed as an option.



This symbol shows the driving direction – for better orientation in figures and graphics.

## 1.2 Serial plates and component numbers

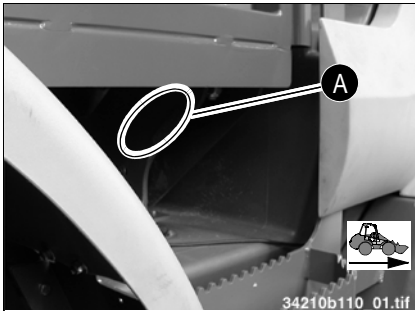


Fig. 1: Serial plate: location

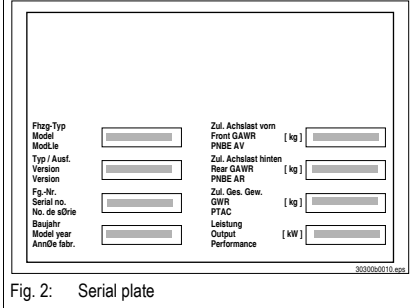


Fig. 2: Serial plate

### Serial number

The serial number is stamped in the cab support **A** (on the right as seen in driving direction, behind the cab door lining). It is also located on the serial plate.

The serial plate is located on the machine frame on the right, next to the loader unit bulk-head (on the right above the front axle).

### Serial plate information

#### Example:

Machine model: 680  
 Version: 343-01  
 Serial no.: 343 01 0001  
 Model year: 2005  
 Front gross axle weight rating: 9370 lbs. (4250 kg)  
 Rear gross axle weight rating: 9370 lbs. (4250 kg)  
 Gross weight rating: 15,432 lbs. (7000 kg)  
 Output: 75 hp (56 kW)

Other information – see 2 Specifications on page 2-1.

### Cab number

The serial plate (arrow) is located in the cab, on the top right frame member.

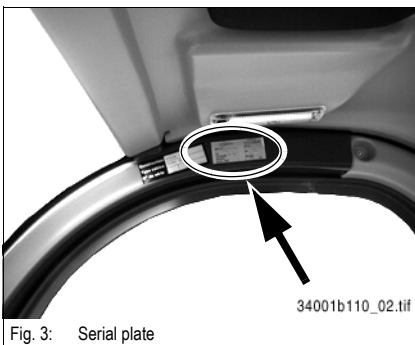


Fig. 3: Serial plate

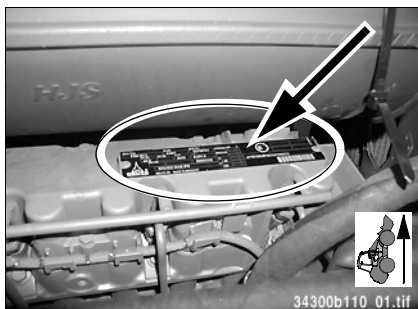


Fig. 4: Diesel engine number

### Engine number

The serial plate (arrow) is located on the cylinder-head cover (engine).

Example: Deutz BF4M2011

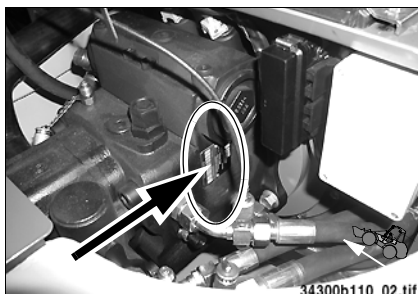


Fig. 5: Hydraulic pump: serial plate

### Hydraulic pump number

The serial plate (arrow) is located on the hydraulic pump housing (next to where the pump is attached to the diesel engine).

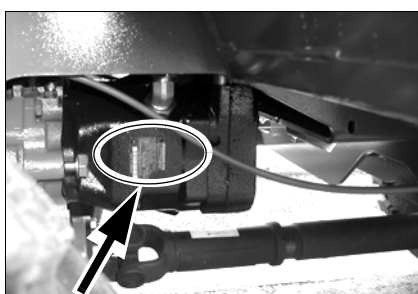


Fig. 6: Hydraulic motor: serial plate

### Hydraulic motor number

The serial plate (arrow) is located above the drive shaft, on the right of the hydraulic motor.



Fig. 7: Rear axle and gearbox: serial plate

### Rear axle number

The serial plate (arrow) is located on the inside of the axle tube, on the left side in the driving direction (arrow).

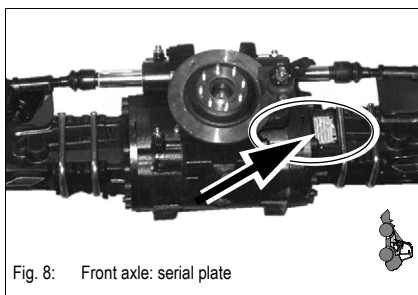


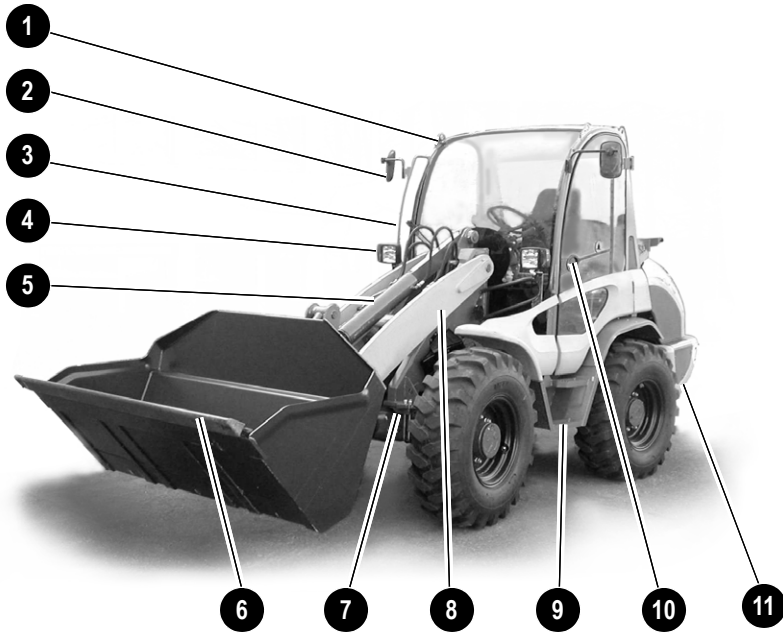
Fig. 8: Front axle: serial plate

### Front axle number

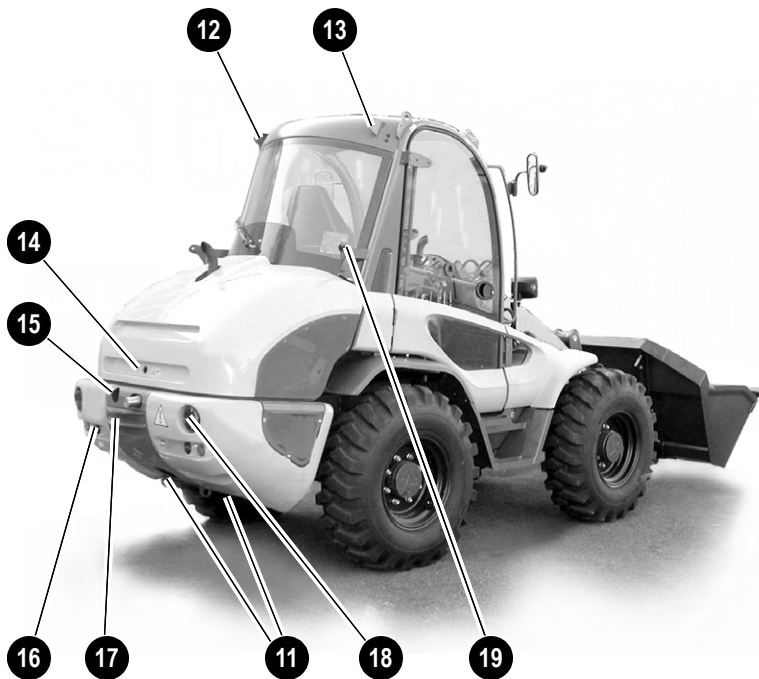
The serial plate (arrow) is located on the inside of the axle tube, on the right side in the driving direction (arrow).

### 1.3 Machine overview

- 1 Bracket for working light<sup>1</sup>
- 2 Rearview mirror
- 3 Handle
- 4 Headlight with turn indicator
- 5 Tilt cylinder
- 6 Front-edge protection
- 7 Front eye hook for tying down the machine
- 8 Loader unit
- 9 Access
- 10 Door handle
- 11 Rear eye hook for tying down the machine



- 12 Bracket for working light
- 13 Bracket for rotating beacon (option)
- 14 Engine cover lock
- 15 Backup warning system
- 16 Reflectors
- 17 Tow facility
- 18 Brake, rear and turn indicator lights
- 19 Door latch



1. Bracket for working light is only for removing the cab, and may not be used for crane-lifting the machine.

Fig. 9: Machine outside views